



An Underwater World

The Big Island of Hawaii is a feast for the senses, and our students have a fabulous opportunity to experience the vast diversity of marine life during a day snorkeling and exploring coral reef ecosystems. Just off the Kona coast, a catamaran voyage takes us to a protected marine sanctuary where we spend hours among sea turtles, colorful tropical fish, and living corals. All during this amazing experience our naturalist guides are there to help us understand what we're seeing. During the summertime, the water temperature ranges from 78-80 degrees, so our students can spend lots of time exploring, under close adult supervision. On board the catamaran we have lunch, and can even blow off some steam on the 2 story waterslide. Besides snorkel and fins, there are plenty of other ways to explore the reef, including specially designed view boxes and flotation devices. A wonderful day exploring Hawaii's ocean world!



Did you Know?

The Big Island of Hawaii is home to two distinct climates? On the wetter windward side of the Island is Hilo and the campus of the University of Hawaii. This is our base of operations for exploring Hawaii Volcanoes National Park and the amazing rainforests and waterfalls of the Big Island. Here more than 100 inches of rain falls in a typical year, and the Island is lush with orchids, papaya groves, thick jungle and wild and colorful bird species.

On the Kona side of the Island, everything changes. Here on the

Coming soon! Adventure Guides

These are our students' own personal study guides, full of interesting information and interactive materials for use at home and during program preparation sessions that take place in the months before departure. These guides are mailed to all enrolled students in the spring, and are used along with the Naturalist to help students get ready for their Adventure. The Adventure Guide is also a valuable tool that students will use while completing the journal-keeping and writing assignments required for earning academic credit, both on the high school and college levels. For more information on the various academic credit options available for students participating in an Earth Explore Adventure, go online to earthexplore.com and visit the Academic Credit link.



leeward side of the Big Island, sunny, dry and generally clear weather prevails. This is because the moist Trade Winds are wrung of their moisture while passing from east to west. This is our base for coral reef studies, astronomy activities, and of course, beach time. While visiting the Kona coast we stay in a resort hotel on Kailua Bay.

University of Hawaii Prepares for Earth Explore



For the past ten years the staff of the University of Hawaii at Hilo has hosted Earth Explore students during their time on the Big Island.

The amazing educational resources of the University ensure that students receive an unforgettable and active learning adventure. The program introduces students to Hawaiian culture as well as science and history, and provides a rich insight into the Islands that others never receive. While on Hilo side of the Island, students will be staying on the campus of the University, where food and activities are steps away, and dorm style on campus accommodations make for a great college atmosphere. In the evenings University classroom facilities are available for fun activities like arts and crafts, lab demonstrations, and even hula lessons!

Websites to Visit

Hawaii Volcanoes National Park

www.nps.gov/havo

Great overview of this spectacular destination of the Big Island Adventure program. Plants, animals, volcanoes, and current lava flow information.

Hawaii's Natural environment

www.kahea.org/nars/culture.html

Information on Hawaii's native plants and animals and their importance in traditional Hawaiian culture.

Marine Life

www.coralreefnetwork.com/marlife/default.htm

Everything about the underwater world of Hawaii, plus useful links to further resources and more reading. Cool site!



Hawaii Volcano Observatory

<http://hvo.wr.usgs.gov/cam/index.htm>

Want to see a live picture of the most active vent of the Kilauea volcano? Here it is. It is often obscured by steam, but there are good links to more volcano information.

History and Archaeology

<http://www.nps.gov/puho>

The world famous "Place of Refuge" National Historic Park. This is considered among the most important of Hawaii's cultural sites. We visit here to learn how native Hawaiian culture operated before the arrival of Europeans.

HIGH SCHOOL AND COLLEGE CREDIT OPPORTUNITIES

Read all About It!

Besides all of the adventures they will be having, students who participate in the Earth Explore program have the unique opportunity to take something especially valuable from the program...high school or college credit. Because of the number, quality and variety of educational experiences offered, all Earth Explore Adventures have been approved for academic credit. Upon enrollment, all students are given the chance to earn high school level field credit. Students need only complete the required work, mail it in on time, and receive a satisfactory evaluation. All of the necessary forms and instructions are available on the Earth Explore website by following the "Academic Credit" link. To be eligible for college level credit, students must have completed the 7th grade at the time of travel, and do the work described for the course. A link to that course, offered by Eastern Washington University in conjunction with Earth Explore, is available at the "Academic Credit" link on the Earth Explore website.



SET YOUR WATCH-KNOW YOUR HAWAII TIMEZONES

Being way out in the Pacific Ocean, many people are confused by Hawaiian time zones. The issue is further complicated because Hawaii doesn't observe Daylight Savings Time. For most of the year, Hawaiian Time is 2 hours behind the West Coast of the U.S., 3 hours behind Mountain Time, 4 hours behind Central Time, and 5 hours behind Eastern Time. However, in the summer, you have to add an hour...because Hawaiian clocks don't "spring forward." Thus, during the summer months, Hawaii is 3 hours behind the Pacific Time Zone, 4 hours behind the Mountain Zone, 5 hours behind the Central Zone, and 6 hours behind the Eastern Zone. Set your watch!



SPRING NEWSLETTER

-PACKED WITH TRAVEL DETAILS

How to pack a suitcase, how to handle spending money, how to make phone calls. These are all important travel details, and they are among the items we cover in our spring edition of *the Naturalist* newsletter. Packed with information that you can use, the spring newsletter will be arriving in your mailbox in late March.

Picture-taking Tips

MAKE THEM COUNT!

We're often asked how to get great pictures in any situation. The most important part of good picture taking is to fill the frame with your subject. Also, keep the sun or other light source directly on what you want to showcase. In the case of people, always keep the sun behind your back (if you are taking the picture) and at a slight angle if possible. That way your subjects won't have to squint. And try to avoid shooting when the sun is directly overhead. That leads to deep shadows that make faces look scary! One other tip. Take plenty of batteries. That way you can use your flash indoors, or in areas where the light is dim, or shadows are harsh, to help "fill in" your subject. The flash was used in this picture to illuminate the faces. That can make the difference between a forgettable picture, and one you'd put on a wall or email to friends.

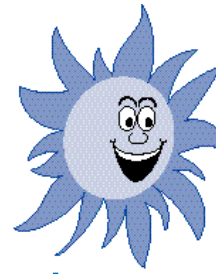
Stay Organized to Maximize the Fun!

Part of the fun of an Earth Explore trip is learning to handle yourself and your gear responsibly. Before you leave, practice these organizational skills.

- Get up at a set time each morning.
- Pack your day bag for a weekend trip, and try to keep it organized the entire time.
- Load and unload your large duffel (or suitcase) with the items on the packing list until you can do it quickly and easily.
- Devise a plan to organize the spending money you'll need on your Earth Explore trip
- Write out a schedule for your day, dividing it into 30 minute blocks. Try to keep as closely to the schedule as possible.

University of Hawaii Instructors

Each Earth Explore group is accompanied by full-time University of Hawaii instructors during its program. These instructors coordinate all program logistics like checking in and out of hotels, working with program partners, and keeping the group always on schedule. In addition, the University staff members serve as guides on travel days, leading the group in scenic and educational walks, discussions and workshop activities. They are joined at various venues by science and history specialists and resource persons. All of these activities are coordinated with Earth Explore Leaders, and staff at the National Office in Santa Rosa.



Travel Weather

Weather during the program will be warm and dry on the Kona side of the Island, and warm and sometimes wet on the Hilo side. Average temperatures and rainfall are listed

below. Students should keep a hooded windbreaker in their day bags, since showery weather is common on the windward side of the Island. They should also bring a fleece jacket in their suitcase, since they will be visiting elevations on Kilauea and Mauna Kea where cool temperatures are possible.

Average June Weather

City	High	Low	Rainfall
Hilo	82	70	10"
Kona	82	68	0"

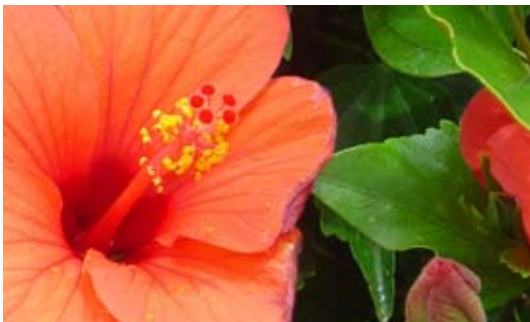
The Tropical Sun: Protect yourself!

We advise all of our students to be extremely cautious about sun exposure. Due to the tropical sun angle and intensity at the latitude of the Hawaiian Islands, burns can occur quickly, even on cloudy days. We encourage students to wear protective head gear at all times, as well as liberal applications of sunblock (at least SPF 45 for ears, nose and feet) and sunscreen of at least SPF 25 for exposed skin areas.

How Much Luggage?



We ask students and Leaders to limit their luggage to *1 checked piece, and 1 carry-on in a day bag*. The limits are necessary due to luggage capacities on the motorcoach, and to insure no participant is overly burdened by excess gear during the program. Remember, since all students and Leaders must transport their own bags from hotel to motorcoach (and back), it is always best to pack lightly! We recommend that students and Leaders use a soft-sided duffel (preferably with wheels) for their larger piece, and a small day-pack for their smaller piece.



what to bring?

Earth Explore Packing

For boys and girls

Clothing

- Light hiking boots-1 pair
- Running shoes/sneakers-1pair
- Fleece jacket-1
- Waterproof windbreaker with hood-1
- Pants-Denim-2 pair
- Pants-Khaki-1 pair
- Sweatpants-1pair
- Shorts-cotton-2-3 pair
- Hiking socks-heavy cotton-2pair
- Other socks-4 pair
- Underwear-5-6 pair
- T-shirts-4-6
- Short-sleeved shirt-3
- Travel cap-1 (supplied by EE)

Pajama/sleepshirt-1-2

- Swimsuit-1
- Sandals/Tevas/flips

Toiletries Kit

- Toothbrush with case-1
- Toothpaste-1
- Shampoo-1
- Soap with case-1
- Hygiene products
- Small towel-1

Personal Gear

- (in daybag)
- Sunglasses-1
- Sunscreen-1 SPF 25
- Sunblock-1 SPF 45

Lip balm-1

- Camera-1
- Extra camera batteries
- Film-4-5 rolls 24 exp. 200ASA
- Bandana or handkerchief-1
- Ziplock bags-10 (for organizing)
- Field Journal-1 (supplied by EE)
- Pencil-2
- Phone cards-2-30 minute
- Water bottle-1
- Credentials-1 (supplied by EE)
- Optional-small flashlight
- Optional-small binoculars

Common Sense Packing Tips

- Pack outfits that can be layered.
- Pack clothes that can be combined in many different ways.
- Pack lots of cottons and neutral colors like khaki.
- Instead of one heavy coat, bring polarfleece and sweatshirts that can be layered.

ABOUT EARTH EXPLORE

Earth Explore was founded in 1995. We are a specialized company dedicated to providing the very finest combination of adventure, fun, and outdoor education. Due to the content of our programs, students chosen to participate can earn academic credit, both at the high school and college levels. Our staff and our partner organizations make all of the educational and travel arrangements and work with the airlines, hotels and motorcoach companies directly. That way we can be assured of the highest quality experience for our students and our teachers.

Earth Explore and the not for profit Earth Explore Foundation limit participation on each of our Adventures each summer to ensure program content meets the highest standards. Our expert on site partners design the educational program content to our exacting standards. As such each Earth Explore program is unique and the experiences and educational activities cannot be duplicated.

THE EARTH EXPLORE FOUNDATION

The Earth Explore Foundation's mission is to provide young people access to exciting educational experiences in the natural world. This mission guides the activities undertaken on Earth Explore's Adventure programs. Each student is encouraged to extend his or her own personal horizons, while gaining a better understanding of the natural world, its cultures and complex and interrelated systems.

CAN A FRIEND PARTICIPATE?

As spring approaches, this is a question that we hear often in the National Office. The answer is yes, in most cases. There must be space in the local group, the friend must be between the ages of 10 and 14, and he or she must be approved by the Leaders. The best way to find out for sure is to have the friend's parents call the National Office. We'll be happy to fill them in!



Earth Explore Adventures www.earthexplore.com info@earthexplore.com 707 538-7400 toll free 877 224-3623

EARTH EXPLORE ADVENTURES
4831 Lucy Ct.
Santa Rosa, CA 95405