



An Underwater World

The Big Island of Hawaii is a feast for the senses, and our participants will have a fabulous opportunity to experience the vast diversity of marine life during a day snorkeling and exploring coral reef ecosystems. Just off the Kona coast, a catamaran voyage takes us to a protected marine sanctuary where we spend hours among sea turtles, colorful tropical fish, and living corals. All during this amazing experience our naturalist guides are there to help us understand what we're seeing. During the summertime, the water temperature ranges from 78-80 degrees, so we can spend lots of time exploring, and discussing our experiences. A buffet



lunch will be served on board the ship, as we soak up the atmosphere of the Big Island. Besides snorkel and fins, there are plenty of other ways to explore the reef, including view boxes and flotation devices. A wonderful day exploring Hawaii's ocean world!

Did you Know?

The Big Island of Hawaii is home to two distinct climates? On the wetter windward side of the Island is Hilo and the campus of the University of Hawaii. This is our base of operations for exploring Hawaii Volcanoes National Park and the amazing rainforests and waterfalls of the Big Island. Here more than 100 inches of rain falls in a typical year, and the Island is lush with orchids, papaya groves, thick jungle and wild and colorful bird species.

On the Kona side of the Island, everything changes. Here on the leeward side of the Big Island, sunny, dry and generally clear weather prevails. This is because the moist Trade Winds are wrung of their moisture while passing from east to west. This is our base for coral reef studies, astronomy activities, and of course, beach time.

While visiting the Kona coast we stay in a resort hotel on Kailua Bay.

Coming soon! Caps, Credentials

All participants who take part in Earth Explore Adventures are outfitted with one of a kind field caps, journals, t-shirts and photo credentials. Along with our partners at the University of Hawaii, Earth Explore assembles a rewarding program of active outdoor education. Field journals allow those taking the program for academic credit to make notes and write their impressions in any location. Since most of our activities are for our participants only, our photo credentials are essential for identifying group participants at different program venues. They also come in handy during networking and group receptions.



University of Hawaii Prepares for Earth Explore



For the past ten years the staff of the University of Hawaii at Hilo has hosted Earth Explore programs to the Big Island. They know the Island and its wonders like no one else. The amazing educational resources of the University ensure that our participants receive an unforgettable and active learning adventure. The program is diverse, ranging from Hawaiian culture to science, art and history, and provides a rich insight into the Islands that others never receive. While on Hilo side of the Island, teachers will be staying in special University accommodations, where food and activities are steps away. In the evenings University classroom facilities are available for fun activities like receptions, lab demonstrations, and even hula lessons! On the Kona side of the island, we stay at a resort hotel on Kailua Bay.

Websites to Visit

Hawaii Volcanoes National Park

www.nps.gov/havo

Great overview of this spectacular destination of the Hawaii Adventure program. Plants, animals, volcanoes, and current lava flow information.

Hawaii's Natural environment

www.kahea.org/nars/culture.html

Information on Hawaii's native plants and animals and their importance in traditional Hawaiian culture.

Marine Life

www.coralreefnetwork.com/marilife/default.htm

Everything about the underwater world of Hawaii, plus useful links to further resources and more reading. Cool site!



Hawaii Volcano Observatory

<http://hvo.wr.usgs.gov/cam/index.htm>

Want to see a live picture of the most active vent of the Kilauea volcano? Here it is. It is often obscured by steam, but there are good links to more volcano information.

History and Archaeology

<http://www.nps.gov/puho>

The world famous "Place of Refuge" National Historic Park. This is considered among the most important of Hawaii's cultural sites. We visit here to learn how native Hawaiian culture operated before the arrival of Europeans.

GRADUATE CREDIT OPPORTUNITIES

Read all About It!

Looking for graduate or professional hours as an adjunct to your Earth Explore Adventure for Teachers? Because of the number, quality and variety of educational experiences offered, all Earth Explore Adventures have been approved for academic credit. Upon enrollment, teachers become eligible to enroll in several graduate level courses that focus on cultures and natural environments. The programs are a joint project of Earth Explore and Eastern Washington University's Eisenhower Center for International and Educational Outreach. Credit enrollment is available online on a quarter credit basis, which can be converted to semester credit hours. All of the necessary forms and instructions are available on the Earth Explore website by following the "Academic Credit" link, or directly at this link: <http://www.ewu.edu/x48042.xml>. The courses are open for teachers as well as other professionals who hold a bachelor's degree or higher.



Picture-taking Tips

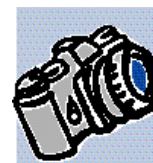


SET YOUR WATCH-KNOW YOUR HAWAII TIME ZONES

Being way out in the Pacific Ocean, many people are confused by Hawaiian time zones. The issue is further complicated because Hawaii doesn't observe Daylight Savings Time. For most of the year, Hawaiian Time is 2 hours behind the West Coast of the U.S., 3 hours behind Mountain Time, 4 hours behind Central Time, and 5 hours behind Eastern Time. However, in the summer, you have to add an hour...because Hawaiian clocks don't "spring forward." Thus, during the summer months, Hawaii is 3 hours behind the Pacific Time Zone, 4 hours behind the Mountain Zone, 5 hours behind the Central Zone, and 6 hours behind the Eastern Zone. Set your watch!

SPRING NEWSLETTER -PACKED WITH TRAVEL DETAILS

Looking for practical information about travel to Hawaii? Look no further than the Earth Explore Hawaii Adventure spring newsletter. We cover what you need to bring, what to expect in accommodations, activities and adventures, and the latest updates from our field partners at the University of Hawaii. Coming in May!



MAKE THEM COUNT!

We're often asked how to get great pictures like the one to the left. The most important part of good picture taking is to fill the frame with your subject. Also, keep the sun or other light source directly on what you want to showcase. In the case of people, always keep the sun behind your back (if you are taking the picture) and at a slight angle if possible. That way your subjects won't have to squint. And try to avoid shooting when the sun is directly overhead. That leads to deep shadows that make faces look scary! One other tip. Take plenty of batteries. That way you can use your flash indoors, or in areas where the light is dim, or shadows are harsh, to help "fill in" your subject. The flash was used in this picture to illuminate the faces. That can make the difference between a forgettable picture, and one you'd put on a wall or email to friends.

Networking Opportunities- Don't Miss Out

One of the most useful, and enjoyable aspects of our Earth Explore Adventures for Teachers is the networking that takes place.

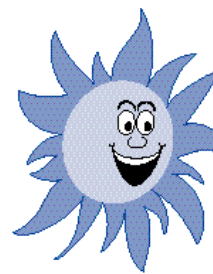
Our participants have the unique opportunity to establish friendships, compare notes, and even develop new curriculum materials with their fellow educators from across the nation.

Best of all, participants in our programs tend to be like-minded; sharing a common interest in the subject matter and destination, and in bringing what they've learned back into the classroom with them in the fall.



University of Hawaii Instructors

Each Earth Explore group is accompanied by full-time University of Hawaii instructors during its program. These instructors coordinate all program logistics like checking in and out of hotels, working with program partners, and keeping the group always on schedule. In addition, the University staff members serve as guides on travel days, leading the group in scenic and educational walks, discussions and workshop activities. They are joined at various venues by science and history specialists and resource persons. All of these activities are coordinated with operations staff at the National Office in Santa Rosa.



Travel Weather

Weather during the program will be warm and dry on the Kona side of the Island, and warm and sometimes wet on the Hilo side.

Average temperatures and rainfall are listed below. We recommend that all participants keep a hooded windbreaker in their day bags, since showery weather is common on the windward side of the Island. You should also carry a fleece jacket in your suitcase, since we will be visiting elevations on Kilauea and Mauna Kea where cool temperatures are possible.

Average June Weather

City	High	Low	Rainfall
Hilo	82	70	10"
Kona	82	68	0"

The Tropical Sun: Protect yourself!

We advise all of our program participants to be extremely cautious about sun exposure. Due to the tropical sun angle and intensity at the latitude of the Hawaiian Islands, burns can occur quickly, even on cloudy days. We encourage everyone to wear protective head gear, as well as liberal applications of sunblock (at least SPF 45 for ears, nose and feet) and sunscreen of at least SPF 25 for exposed skin areas.

what to bring?

Earth Explore Packing List

Our suggestions for men and women

Clothing

Light hiking boots-1 pair
Running shoes/sneakers-1pair
Fleece jacket-1
Waterproof windbreaker with hood-1
Pants-Denim-2 pair
Pants-Khaki-1 pair
Sweatpants-1pair
Shorts-cotton-2-3 pair
Hiking socks-heavy cotton-2pair
Other socks-4 pair
Underwear-5-6 pair
T-shirts-4-6
Short-sleeved shirt-3
Travel cap-1 (supplied by EE)

Pajama/sleepshirt-1-2
Swimsuit-1
Sandals/Tevas/flips

Toiletries Kit

Toothbrush with case-1
Toothpaste-1
Shampoo-1
Soap with case-1
Hygiene products
Small towel-1

Personal Gear (in daybag)

Sunglasses-1
Sunscreen-1 SPF 25
Sunblock-1 SPF 45

Lip balm-1
Camera-1
Extra camera batteries
Film-4-5 rolls 24 exp. 200ASA
Bandana or handkerchief-1
Ziplock bags-10 (for organizing)
Field Journal-1 (supplied by EE)
Pencil-2
Phone cards-2-30 minute
Water bottle-1
Credentials-1 (supplied by EE)
Optional-small flashlight
Optional-small binoculars

How Much Luggage?



We ask all participants to limit their luggage to *1 checked piece, and 1 carry-on in a day bag*. The limits are necessary due to luggage capacities on the motorcoach, and to insure no participant is overly burdened by excess gear during the program. Remember, since you will have to transport their own bags from hotel to motorcoach (and back), it is always best to pack lightly! We recommend a soft-sided duffel (preferably with wheels) for your larger piece, and a medium sized day-pack for your smaller piece.

Common Sense Packing Tips

- Pack outfits that can be layered.
- Pack clothes that can be combined in many different ways.
- Pack lots of cottons and neutral colors like khaki.
- Instead of one heavy coat, bring polarfleece and sweatshirts that can be layered.

ABOUT EARTH EXPLORE

Earth Explore was founded in 1995. We are a specialized company dedicated to providing the very finest combination of adventure, fun, and outdoor education. Due to the content of our programs, participants have the opportunity to earn academic credit, at the graduate level. Our staff and our partner organizations make all of the educational and travel arrangements and work with the airlines, hotels and motorcoach companies directly. That way we can be assured of the highest quality experience for our teachers and their guests.

Earth Explore and the not for profit Earth Explore Foundation limit participation on each of our Adventures each summer to ensure program content meets the highest standards. Our expert on site partners design the educational program content to our exacting standards. As such each Earth Explore program is unique and the experiences and educational activities cannot be duplicated.

THE EARTH EXPLORE FOUNDATION

The Earth Explore Foundation's mission is to provide access to rewarding educational experiences in the natural world. This mission guides the activities undertaken on Earth Explore's Adventure programs. Each participant is encouraged to extend his or her own personal horizons, while gaining a better understanding of the natural world, its cultures and complex and interrelated systems.

CAN A FRIEND, SPOUSE OR COLLEAGUE PARTICIPATE?

As spring approaches, this is a question that we hear often in the National Office. The answer is yes, in most cases. There must be space on the departure date, and participants must make separate application. The best way to find out for sure is to call the National Office. We'll be happy to provide the necessary information.



Earth Explore Adventures www.earthexplore.com info@earthexplore.com 707 538-7400 toll free 877 224-3623

EARTH EXPLORE ADVENTURES
4831 Lucy Ct.
Santa Rosa, CA 95405